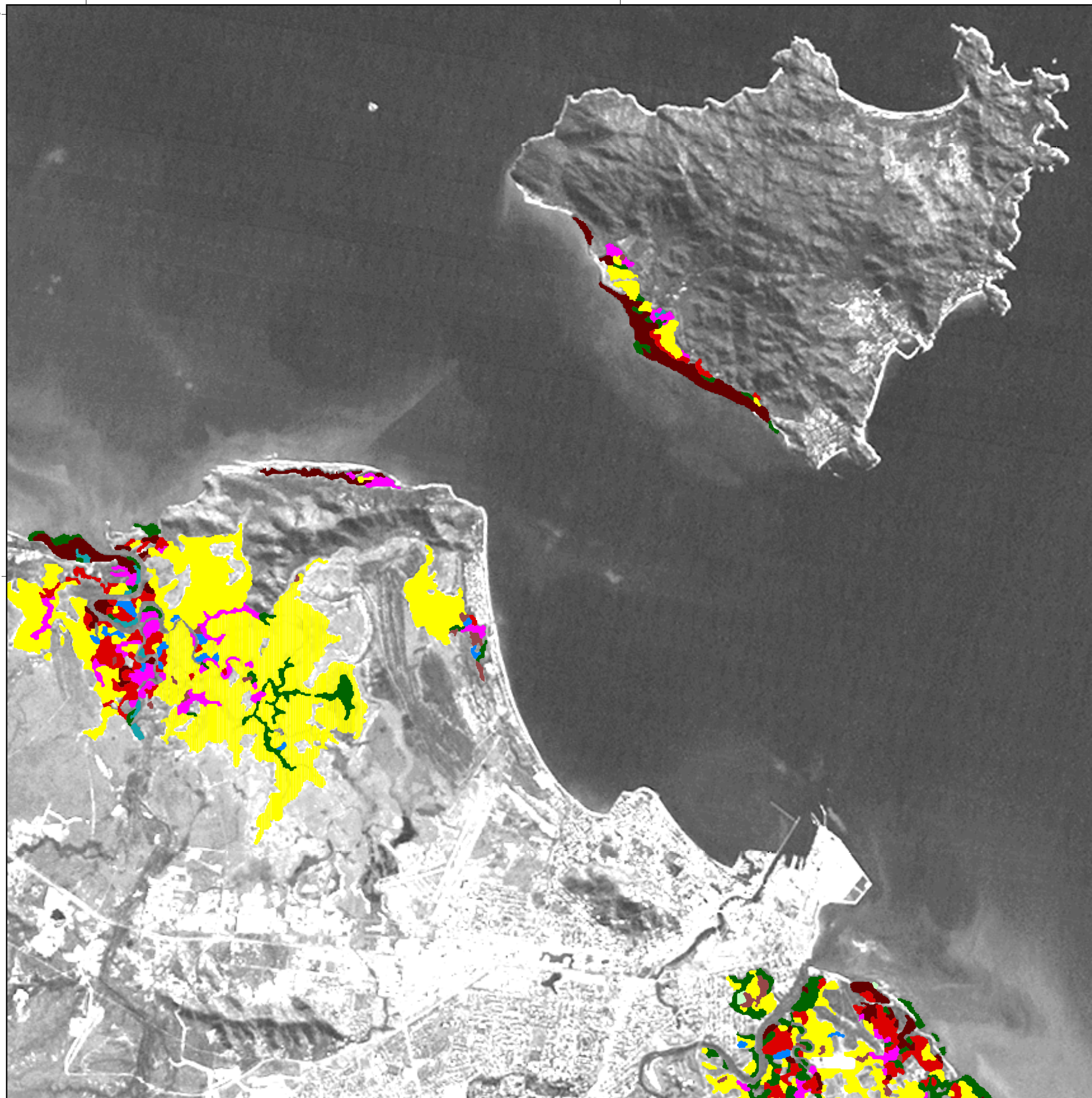


19°6'



19°12'S

146°42'E

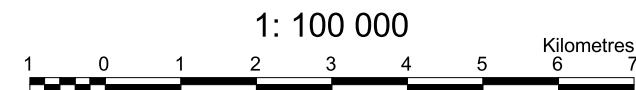
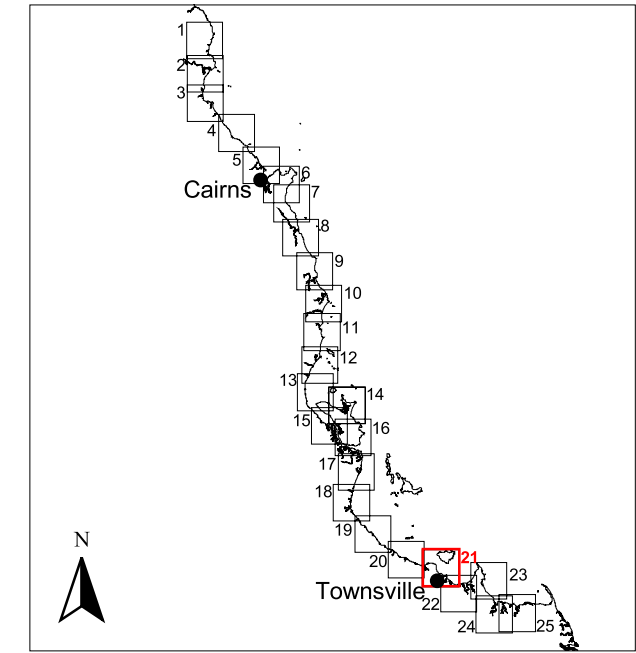
146°48'



## COASTAL WETLAND COMMUNITIES Cape Tribulation to Bowling Green Bay

Sheet 21: Magnetic Island

- Closed *Rhizophora*
- Closed *Avicennia*
- Open *Avicennia*
- Closed *Ceriops*
- Open *Ceriops*
- Closed *Rhizophora* / *Avicennia*
- Closed *Avicennia* / *Ceriops*
- Open *Avicennia* / *Ceriops*
- Closed Mixed
- Closed *Bruguiera*
- Saline Grassland
- Saltpan
- Samphire-dominated Saltpan



Prepared and produced by the Assessment and Monitoring Unit, Queensland Fisheries Service, Queensland Department of Primary Industries, July 2001  
 © The State of Queensland, QDPI 2001  
 Projection: UTM Zone 55 Spheroid: Australian National Datum: GDA94  
 Background image: Landsat TM Band 3, 24-06-1998  
 © Commonwealth of Australia  
 Coastline data: © Commonwealth of Australia, AUSLIG.

